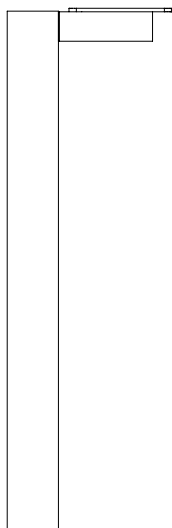


A noga z możliwością montażu w narożniku blatu x 1 szt | leg with possibility to mount in corner of the top x 1 pc



B regulator x 1 szt | adjustable feet x 1 pc



C wkręt x 5 szt | sharp screw x 5 pcs



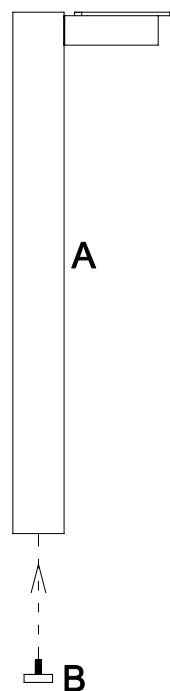
INSTRUKCJA MONTAŻU | ASSEMBLY INSTRUCTION

ST 702

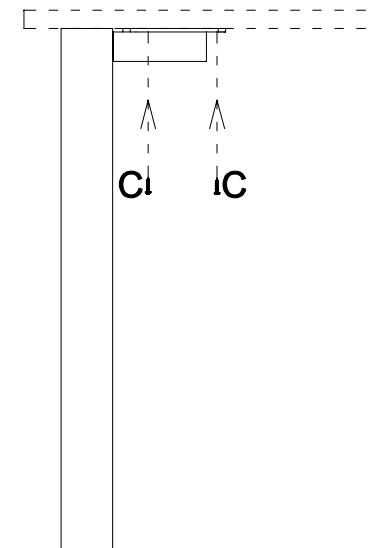


2019.11

1



2



potrzebne narzędzia | necessary tools

